

Located on the shores of Georgian Bay, the City of Owen Sound strikes a balance between historic charm and modern society. This idyllic community is supported by a modern healthcare system, strong police and fire services and a significant community of arts and culture. Owen Sound boasts a colourful history of politicians, athletes, soldiers, actors, pirates and bootleggers. The City retains an endearing historic charm, while capitalizing on modern technology – a perfect balance in a beautiful community.

Southbridge currently operates two long-term care homes in Owen Sound:

- ◆ Georgian Heights, a 40-bed home overlooking beautiful Georgian Bay. Visit the home's website at [www.georgian-heights.ca](http://www.georgian-heights.ca).
- ◆ Maple View, a 29-bed home in the heart of Owen Sound. Visit the home's website at [www.maple-view.ca](http://www.maple-view.ca).

Southbridge Owen Sound will bring together 91 new long-term care beds and the 69 existing beds from Georgian Heights and Maple View, resulting in a brand new long-term care home with 160 upgraded private and basic suites.

If you are interested in placement at our long term care facility, please contact Home and Community Care at 1-519-474-5668 ext 5587 or via email [Tara.Phin@lhins.on.ca](mailto:Tara.Phin@lhins.on.ca).

If you are interested in employment opportunities, please submit your resume or contact us by emailing [contact@southbridgecare.com](mailto:contact@southbridgecare.com).



## Building Amenities

Southbridge Owen Sound will be a three-storey, 160-bed long-term care home with five resident home areas for 32 residents each. The main floor will have a large programming space for events and gatherings, a physiotherapy fitness room, wellness lounge, worship/theatre, interactive games wall and more. Each resident home area will have two-bedroom and private resident suites, a spa room, activity room, computer lounge/library, resident family lounge, a large dining room and access for all residents to outdoor areas.

Amenities available in the home will include but not be limited to:

- ◆ Hairdressing/barber
- ◆ Weekly faith services
- ◆ Areas designed to host creative & artistic activities
- ◆ Musical entertainment
- ◆ Pet visits
- ◆ Local bus outings
- ◆ Residents' & Family Council
- ◆ Picnics
- ◆ Barbecues
- ◆ Movies

## Health Care Services

The following health care services will be available in the new home:

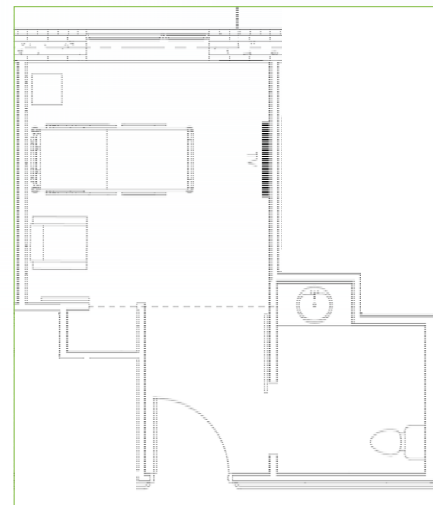
- ◆ Professional health care staff 24/7
- ◆ Ongoing health monitoring
- ◆ Medication administration
- ◆ Assistance with daily activities as required
- ◆ Fully qualified personal support workers and registered staff
- ◆ Medical care by physicians providing services in house
- ◆ Pharmacy services
- ◆ Palliative care
- ◆ Nutritious meals and snacks, including seasonal favourites
- ◆ Variety of activities available daily
- ◆ Physiotherapy services
- ◆ Dietician services
- ◆ Assistance in securing dental and eyecare services in house as available
- ◆ Contracted diagnostic supports available inhouse (i.e. bloodwork services, access to x-rays/ultrasound as available)

## Types of Accommodations

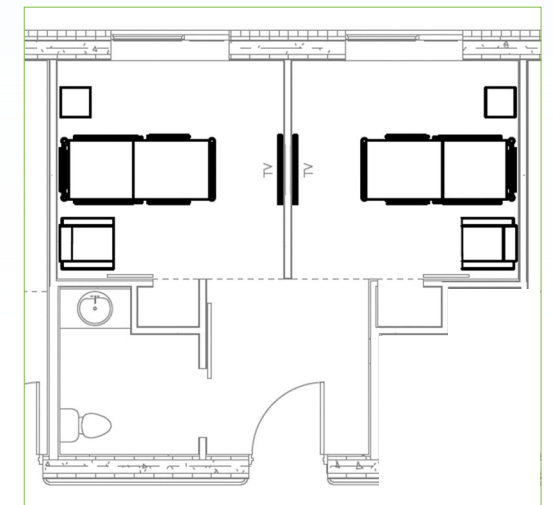
Southbridge Owen Sound will offer two different types of accommodations— 96 private and 32 two-bedroom suites.

The two-bedroom suites are designed for two residents and have one common washroom. They will feature our standard room finishes and amenities and services. The standard room finishes create a simple, clean, and comfortable ambience.

The private suites will each have their own ensuite with premium room finishes and an upgraded package for amenities and services. The private room ensuite will have premium flooring, vanity, countertop and backsplash for a high-end look and feel. The private room will also have upgraded wood-look flooring and an accent wall for a serene residential setting.



*Typical Private Suite*



*Typical Basic Suite*