

The urban hub of North Grenville, Kemptville is an eclectic mix of small-town charm and big city convenience, with plenty of natural beauty and heritage architecture to admire. Catering to a burgeoning population, Kemptville features events and attractions for families, seniors, shoppers, golfers, music lovers, car buffs and nature enthusiasts.

Southbridge currently operates Bayfield Manor in Kemptville, a combined 66-bed long-term care home and 57-suite retirement community. Visit the home's websites at:

- ◆ [www.bayfieldmanorltc.com](http://www.bayfieldmanorltc.com)
- ◆ [www.bayfieldmanorrrh.com](http://www.bayfieldmanorrrh.com)

Southbridge Kemptville is currently under construction and will have private and basic suites made up of 66 long-term care beds to be moved from Bayfield Manor and 94 new beds for a total of 160 beds. It is scheduled to open in the Summer of 2022.

The current Bayfield Manor Retirement Community will remain in place with new retirement suites to be added. It will be a short, one-block walk from Bayfield Manor Retirement Community to the new Southbridge Kemptville.

If you are interested in placement at our long term care facility, please contact Home and Community Care at 1-613-745-5525.

If you are interested in employment opportunities, please submit your resume or contact us by emailing [contact@southbridgecare.com](mailto:contact@southbridgecare.com).



## Building Amenities

Southbridge Kemptville will be a three-storey, 160-bed long-term care home with five resident home areas for 32 residents each. The main floor will have a large programming space for events and gatherings, a physiotherapy fitness room, wellness lounge, worship/theatre, interactive games wall and more. Each resident home area will have two-bedroom and private resident suites, a spa room, activity room, computer lounge/library, resident family lounge, a large dining room and access for all residents to outdoor areas.

Amenities available in the home will include but not be limited to:

- ◆ Hairdressing/barber
- ◆ Weekly faith services
- ◆ Areas designed to host creative & artistic activities
- ◆ Musical entertainment
- ◆ Pet visits
- ◆ Local bus outings
- ◆ Residents' & Family Council
- ◆ Picnics
- ◆ Barbecues
- ◆ Movies
- ◆ Trishaw bike rides

## Health Care Services

The following health care services will be available in the new home:

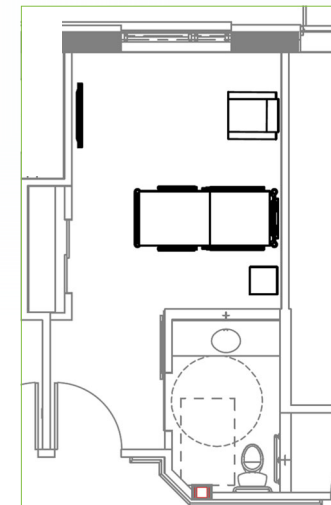
- ◆ Professional health care staff 24/7
- ◆ Ongoing health monitoring
- ◆ Medication administration
- ◆ Assistance with daily activities as required
- ◆ Fully qualified personal support workers and registered staff
- ◆ Medical care by physicians providing services in house
- ◆ Pharmacy services
- ◆ Palliative care
- ◆ Nutritious meals and snacks, including seasonal favourites
- ◆ Variety of activities available daily
- ◆ Physiotherapy services
- ◆ Dietician services
- ◆ Assistance in securing dental and eyecare services in house as available
- ◆ Contracted diagnostic supports available inhouse (i.e. bloodwork services, access to x-rays/ultrasound as available)

## Types of Accommodations

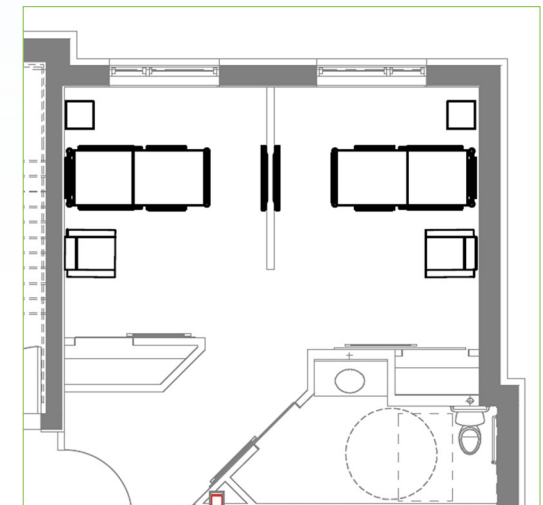
Southbridge Kemptville will offer two different types of accommodations—96 private and 32 two-bedroom suites.

The two-bedroom suites are designed for two residents and have one common washroom. They will feature our standard room finishes and amenities and services. The standard room finishes create a simple, clean, and comfortable ambience.

The private suites will each have their own ensuite with premium room finishes and an upgraded package for amenities and services. The private room ensuite will have premium flooring, vanity, countertop and backsplash for a high-end look and feel. The private room will also have upgraded wood-look flooring and an accent wall for a serene residential setting.



*Typical Private Suite*



*Typical Basic Suite*