



NEWSLETTER

Item 01— Home Management Team

Item 02— Furniture Feature

Item 03— Construction Progress Photos

* Please note: We will not be issuing a December Newsletter as the homes will be focusing on their Christmas festivities. Newsletter will be reinstated in January 2022.

NOVEMBER, 2021



MEET OUR HOME MANAGEMENT TEAM



Randy Pitts, Environmental Services Manager. We ensure the efficient and timely operation of Laundry, Housekeeping, and Maintenance Operations for the home. As a team, we are looking forward to serving existing residents, as well as many new residents, in a brand new facility, loaded with cutting-edge new technology, and all new machinery. I am most looking forward to seeing the smiles on everyone's faces, residents and staff, as they experience the new Southbridge – Cornwall for the very first time!



Kathy Oberg, Special Projects Coordinator. Currently in the Special Projects Coordinator role, performing PanBio Rapid Testing to those staff and essential caregivers who require testing. I also complete the required Infection control audits at our home along with any other special projects needed. Previously my role was Nursing Unit Clerk and in the new home I am excited to see what my current or previous role will evolve into. In the new home I look forward most to seeing the resident's reactions to their brand new living accommodations and helping them settle in to their new surroundings.



Kim Harrop, RPN, RAI and Resident Care Coordinator. After 27 years of working for Parisien Manor, I am excited to be moving to Cornwall's all new state of the art facility to better serve our residents, staff and community.

NOVEMBER, 2021



NEW BEDS & MATTRESSES

As part of the new build process, Southbridge is working on developing a standard catalogue of products that will best support resident and staff needs, while establishing brand continuity and building strong vendor partnerships.

The residents and staff at Georgian Heights participated in six weeks of trials where they evaluated three vendors. Beds and mattresses were scored on a number of categories including comfort, safety, ease of use, performance, and aesthetics.

Results were shared with our leadership team and the two finalists were also evaluated by the Operations team. The products chosen considered resident comfort, safety and infection prevention. We are confident our residents are going to benefit by the products which have been chosen.



Advantage Bed

- Durable, anti-microbial polyester powder-coating of metal components.
- Precision welded orthopedic grid decks. Smooth deck design for easier cleaning and infection control.
- Mobility at any height. Beds move vertically with virtually no horizontal motion.
- Vascular foot rest with easy ratchet operation.
- Arched legs allow wide stance for clearance and stability.
- Honeycomb bumpers protect walls.
- Pendant bed controller & foot-end controller with lockout.
- Stylish and durable thermofoil head & footboards with homelike profile.

Geo-Mattress Max

- Premium, high-density foams are combustion-modified for conformance to Cal TB 117.
- Fluid-repellent, flame-resistant top fabric. Anti-microbial and anti-fungal.
- Removable cover. Exclusive hidden zipper cover design. Flapless construction creates no collection points for contaminants. Combines stain-resistant surface coating to ensure easy, thorough cleaning and infection control.
- Exclusive heel slope & viscoelastic foot section.
- Firm perimeter & multi-tiered core with air channels and pockets.
- Die cut high-density foam in torso & head sections.

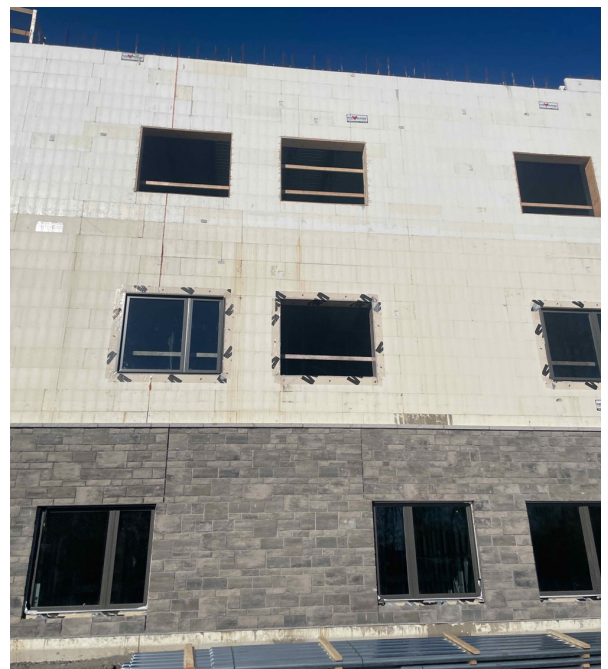
NOVEMBER, 2021

CONSTRUCTION PROGRESS PHOTOS

Installing balcony
concrete slabs



Roof deck is underway.



Window installation
continues.

NOVEMBER, 2021